

# DA.0143.L5.2ES

## Antenna Specification

### 1. Application:

This application shall apply for antenna unit which shall be used such as automotive, conventional communications, smart home, etc..

### 1. Electrical Specification:

*Those specifications were specially defined for customer's model, and all characteristics were measured under the model's handset testing jig .*

#### 2-1. Frequency Band:

Frequency Band	MHz
5G	600-960/1450-2690 3300-4200/4400-6000


#### 2-2. Impedance

50 ohm nominal

#### 2-3. VSWR

##### 2-3-1.Measurement frequency points and VSWR value

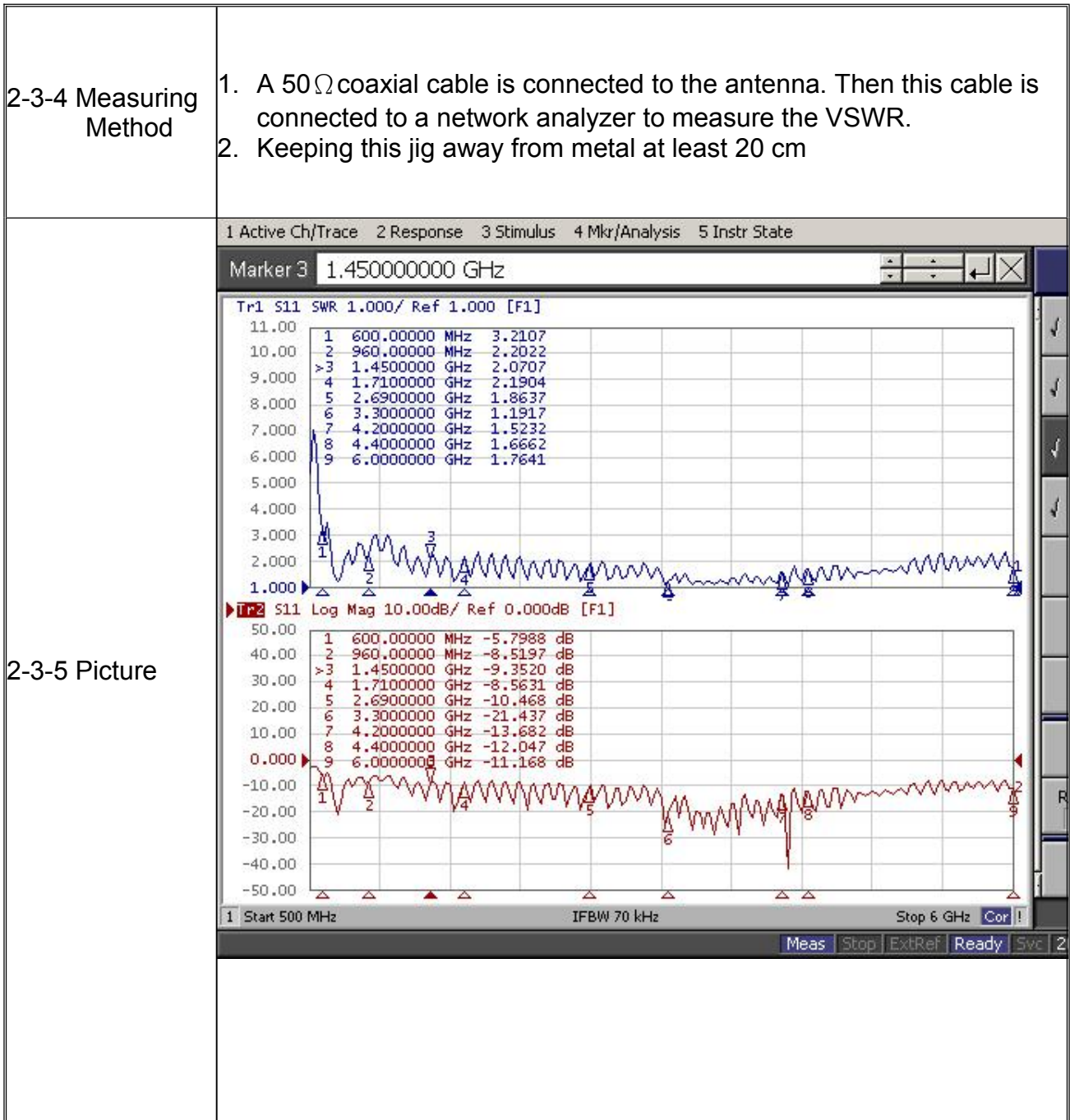
Frequency Band(MHz)	600	960	1450	2690	3300	4200	4400	6000
2-3-3. Typical Value:	3.2	2.2	2.0	1.8	1.1	1.5	1.5	1.7

UNLESS OTHER SPECIFIED TOLERANCES ON :			KINGRF TECHNOLOGY CO., LTD.
$X=\pm$	$X.X=\pm$		
ANGLES = $\pm$		HOLEDIA = $\pm$	
SCALE :	UNIT : mm		
DRAWN BY: LI	CHECKED BY: YS		
DESIGNED BY: De wen	APPROVED BY: YS		
TITLE : DA.0143.L5.2ES Antenna Specification			SPEC REV.
			P0



THIS DRAWINGS AND SPECIFICATIONS ARE THE PROPERTY OF KINGRF TECHNOLOGY CO.,LTD.AND SHALL NOT BE REPRODUCED OR USED AS THE BASIS FOR THE MANUFACTURE OR SALE OF APPARATUS OR DEVICES WITHOUT PERMISSION

## 2-3-2. VSWR



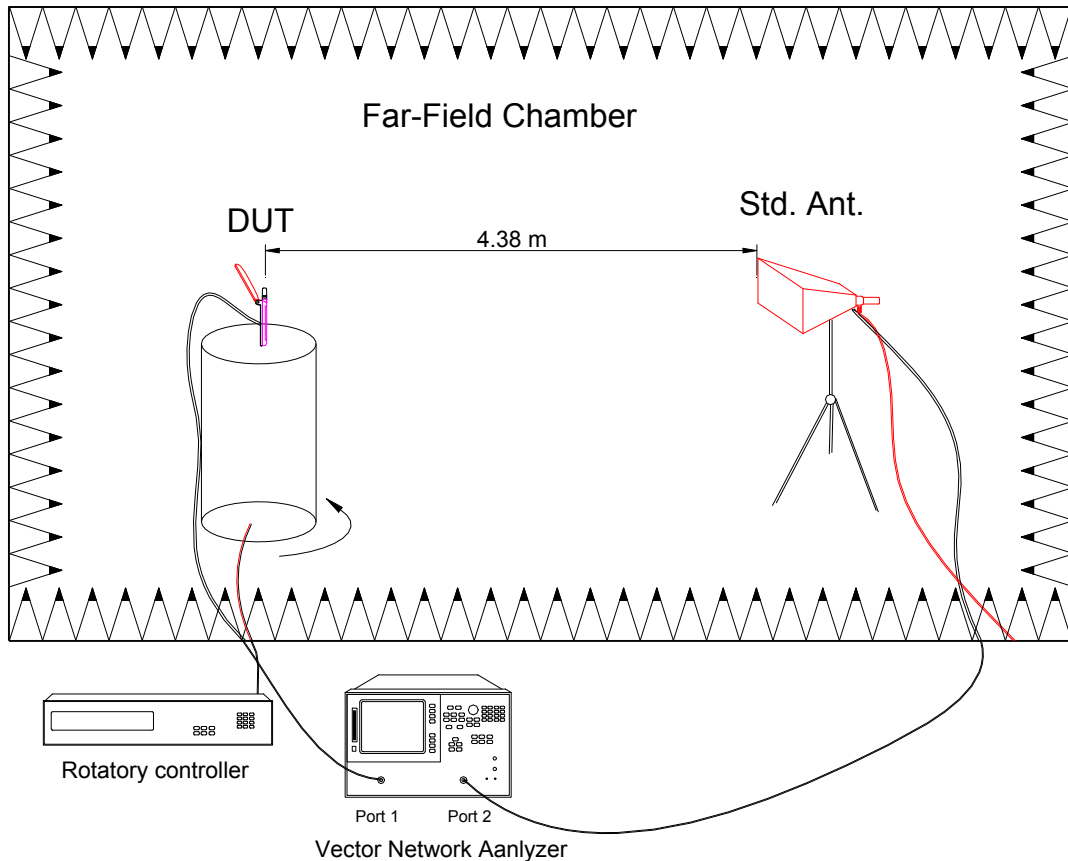
UNLESS OTHER SPECIFIED TOLERANCES ON : <b>X=±</b> <b>X.X=±</b> <b>X.XX=±</b> <b>ANGLES=±</b> <b>HOLEDIA=±</b>		KINGRF TECHNOLOGY CO., LTD.
<b>SCALE :</b>	<b>UNIT : mm</b>	
DRAWN BY: LI	CHECKED BY: YS	THIS DRAWINGS AND SPECIFICATIONS ARE THE PROPERTY OF KINGRF TECHNOLOGY CO.,LTD.AND SHALL NOT BE REPRODUCED OR USED AS THE BASIS FOR THE MANUFACTURE OR SALE OF APPARATUS OR DEVICES WITHOUT PERMISSION
DESIGNED BY: De wen	APPROVED BY: YS	
TITLE : DA.0143.L5.2ES Antenna Specification		SPEC REV. P0

## 2-4. Active test

### 4-5.1 Measure method

1. Using a low loss coaxial cable to link a standard handset jig
2. Fixed this handset jig on chamber's rotator plane
3. Linking jig into network analyzer port and using a probing horn antenna to collect data.
4. Using another standard gain horn antenna to calibrated those data

### 4-5.2 Chamber definition




1. An anechoic chamber (7mx4mx3m) which satisfied far-field condition was applied to avoid multi-path effect
2. The quiet room region is 40cmx40cmx40cm at the center of rotator
3. The distance between DUT and standard antenna is 4.38 m
4. Probing antenna (9120D horn antenna) and standard gain horn antenna (BBHA9120 LPF 700MHz ~6GHz)

UNLESS OTHER SPECIFIED TOLERANCES ON :			<b>KINGRF TECHNOLOGY CO., LTD.</b>
$X = \pm$ $X.X = \pm$ $X.XX = \pm$ <b>ANGLES</b> = $\pm$ <b>HOLEDIA</b> = $\pm$			
<b>SCALE :</b>	<b>UNIT : mm</b>	THIS DRAWINGS AND SPECIFICATIONS ARE THE PROPERTY OF KINGRF TECHNOLOGY CO.,LTD.AND SHALL NOT BE REPRODUCED OR USED AS THE BASIS FOR THE MANUFACTURE OR SALE OF APPARATUS OR DEVICES WITHOUT PERMISSION	
<b>DRAWN BY: LI</b>	<b>CHECKED BY: YS</b>		
<b>DESIGNED BY: De wen</b>	<b>APPROVED BY: YS</b>		
<b>TITLE : DA.0143.L5.2ES Antenna Specification</b>			<b>SPEC REV.</b> <b>P0</b>

## 2-4-1 GAIN & Efficiency

Freq (MHz)	Effi (%)	Effi (dB)	Gain (dBi)
600	36.64	-4.36	-0.35
610	34.31	-4.65	-0.63
620	34.51	-4.62	-0.53
630	20.34	-6.92	-1.85
640	12.48	-9.04	-5.13
650	20.42	-6.9	-3.5
660	34.68	-4.6	-0.84
670	41.8	-3.79	0.06
680	53.95	-2.68	1.59
690	57.92	-2.37	1.9
700	65.24	-1.85	2.09
710	70.91	-1.49	2.05
720	78.44	-1.05	2.34
730	75.82	-1.2	1.88
740	72.41	-1.4	1.94
750	67.03	-1.74	1.73
760	70.97	-1.49	2.11

770	54.72	-2.62	0.82
780	58.99	-2.29	1.24
790	59.72	-2.24	1.21
800	73.09	-1.36	2.04
810	66.76	-1.75	1.45
820	73.08	-1.36	1.9
830	73.55	-1.33	2.27
840	75.35	-1.23	2.62
850	63.09	-2	1.97
860	63.24	-1.99	2.19
870	48.32	-3.16	1.12
880	45.79	-3.39	1.03
890	38.15	-4.18	0.27
900	46.55	-3.32	1.34
910	38.84	-4.11	0.46
920	44.4	-3.53	1.17
930	41.07	-3.86	0.67
940	47.35	-3.25	1.46
950	48.36	-3.16	1.36
960	48.93	-3.1	1.35

UNLESS OTHER SPECIFIED TOLERANCES ON : <b>X=±</b> <b>X.X=±</b> <b>X.XX=±</b> <b>ANGLES=±</b> <b>HOLEDIA=±</b>		 <b>KINGRF TECHNOLOGY CO., LTD.</b>
<b>SCALE :</b>	<b>UNIT : mm</b>	
DRAWN BY: LI	CHECKED BY: YS	THIS DRAWINGS AND SPECIFICATIONS ARE THE PROPERTY OF KINGRF TECHNOLOGY CO.,LTD.AND SHALL NOT BE REPRODUCED OR USED AS THE BASIS FOR THE MANUFACTURE OR SALE OF APPARATUS OR DEVICES WITHOUT PERMISSION
DESIGNED BY: De wen	APPROVED BY: YS	
<b>TITLE : DA.0143.L5.2ES Antenna Specification</b>		<b>SPEC REV.</b> <b>P0</b>




1450	54.1	-2.67	1.59
1460	56.54	-2.48	1.8
1470	54.43	-2.64	1.69
1480	53.46	-2.72	1.44
1490	47.36	-3.25	1.01
1500	39.94	-3.99	0.16
1510	41.84	-3.78	0.67
1520	39.28	-4.06	0.64
1530	47.52	-3.23	1.72
1540	42.47	-3.72	1.35
1550	49.15	-3.09	2.01
1560	48.55	-3.14	1.83
1570	53.6	-2.71	2.08
1580	55.91	-2.53	2.17
1590	51.56	-2.88	1.59
1600	57.63	-2.39	2.05

1610	52.34	-2.81	1.42
1620	60.42	-2.19	2
1630	49.21	-3.08	1
1640	55.44	-2.56	1.6
1650	50.99	-2.92	1.09
1660	56.76	-2.46	1.75
1670	54.4	-2.64	1.43
1680	53.81	-2.69	1.45
1690	80.99	-0.92	2.84
1700	59.94	-2.22	1.34
1710	73.62	-1.33	1.85
1720	54.04	-2.67	0.32
1730	60.58	-2.18	0.86
1740	43.58	-3.61	-0.4
1750	53.96	-2.68	0.36
1760	48.57	-3.14	-0.13

1770	57.62	-2.39	0.23
1780	50.17	-3	-0.6
1790	56.79	-2.46	-0.3
1800	54.81	-2.61	-0.58
1810	57.54	-2.4	-0.12
1820	53.4	-2.72	-0.39
1830	59.03	-2.29	0.18
1840	43.84	-3.58	-1.37
1850	46.63	-3.31	-1.08
1860	36.56	-4.37	-2.21
1870	44.57	-3.51	-1.31
1880	38.26	-4.17	-1.96
1890	50.82	-2.94	-0.55
1900	42.73	-3.69	-1.27
1910	51.55	-2.88	-0.11
1920	49.98	-3.01	-0.1

1930	60.43	-2.19	0.81
1940	59.96	-2.22	0.63
1950	54.26	-2.66	-0.06
1960	59.41	-2.26	0.14
1970	45.95	-3.38	-0.68
1980	49.84	-3.02	0.18
1990	38.76	-4.12	-0.74
2000	41.17	-3.85	-0.14
2010	43.64	-3.6	-0.01
2020	53.4	-2.72	0.82
2030	52.34	-2.81	0.27
2040	47.25	-3.26	-0.24
2050	55.83	-2.53	0.29
2060	51.99	-2.84	0.09
2070	60.84	-2.16	1.14
2080	46.62	-3.31	0.12


UNLESS OTHER SPECIFIED TOLERANCES ON :			<b>KINGRF TECHNOLOGY CO., LTD.</b>
$X = \pm$ $X.X = \pm$ $X.XX = \pm$ <b>ANGLES</b> = $\pm$ <b>HOLEDIA</b> = $\pm$			
<b>SCALE :</b>	<b>UNIT : mm</b>	THIS DRAWINGS AND SPECIFICATIONS ARE THE PROPERTY OF KINGRF TECHNOLOGY CO.,LTD.AND SHALL NOT BE REPRODUCED OR USED AS THE BASIS FOR THE MANUFACTURE OR SALE OF APPARATUS OR DEVICES WITHOUT PERMISSION	
<b>DRAWN BY: LI</b>	<b>CHECKED BY: YS</b>		
<b>DESIGNED BY: De wen</b>	<b>APPROVED BY: YS</b>		
<b>TITLE : DA.0143.L5.2ES Antenna Specification</b>			<b>SPEC REV.</b> <b>P0</b>

2090	52.77	-2.78	0.78
2100	48.87	-3.11	0.36
2110	61.53	-2.11	1.26
2120	42.46	-3.72	-0.3
2130	47.48	-3.23	0.2
2140	47.54	-3.23	0.12
2150	53.32	-2.73	0.88
2160	50.82	-2.94	0.75
2170	52.35	-2.81	0.96
2180	47.22	-3.26	0.4
2190	48.49	-3.14	0.67
2200	39.76	-4.01	-0.22
2210	45.95	-3.38	0.59
2220	39.06	-4.08	-0.03
2230	55.12	-2.59	1.58
2240	47.46	-3.24	1

2250	56.39	-2.49	1.83
2260	52.23	-2.82	1.6
2270	63.96	-1.94	2.65
2280	63.31	-1.98	2.66
2290	55.16	-2.58	2.04
2300	53.33	-2.73	1.98
2310	43.89	-3.58	1.12
2320	56.17	-2.51	2.42
2330	41.2	-3.85	1.01
2340	44.94	-3.47	1.66
2350	36.66	-4.36	0.78
2360	46.82	-3.3	2.33
2370	41.67	-3.8	1.62
2380	47.32	-3.25	2.41
2390	46.81	-3.3	2.08
2400	47.82	-3.2	2.09

2410	51.41	-2.89	2.08
2420	43.42	-3.62	1.34
2430	44.13	-3.55	1.13
2440	40.8	-3.89	0.62
2450	45.8	-3.39	1.03
2460	43.68	-3.6	0.77
2470	37.37	-4.28	0.1
2480	43.39	-3.63	1.1
2490	42.47	-3.72	1.05
2500	52.75	-2.78	2.19
2510	40.22	-3.96	0.75
2520	41.59	-3.81	0.94
2530	40.36	-3.94	0.77
2540	41.49	-3.82	1.02
2550	38.57	-4.14	0.71
2560	33.22	-4.79	0.22

2570	39.97	-3.98	0.85
2580	33.99	-4.69	0.25
2590	42.05	-3.76	1.02
2600	35.22	-4.53	0.17
2610	40.8	-3.89	0.64
2620	37.32	-4.28	0.28
2630	38.33	-4.16	0.38
2640	35.43	-4.51	0.31
2650	32.2	-4.92	0.23
2660	30.08	-5.22	0.09
2670	29.75	-5.26	-0.04
2680	35.22	-4.53	0.56
2690	29.87	-5.25	-0.21

UNLESS OTHER SPECIFIED TOLERANCES ON : $X = \pm$ $X.X = \pm$ $X.XX = \pm$ ANGLES = $\pm$ HOLEDIA = $\pm$		 KINGRF TECHNOLOGY CO., LTD.
SCALE :	UNIT : mm	
DRAWN BY: LI	CHECKED BY: YS	THIS DRAWINGS AND SPECIFICATIONS ARE THE PROPERTY OF KINGRF TECHNOLOGY CO.,LTD.AND SHALL NOT BE REPRODUCED OR USED AS THE BASIS FOR THE MANUFACTURE OR SALE OF APPARATUS OR DEVICES WITHOUT PERMISSION
DESIGNED BY: De wen	APPROVED BY: YS	
TITLE : DA.0143.L5.2ES Antenna Specification		SPEC REV. P0




3300	51.51	-2.88	3.17
3310	61.44	-2.12	2.9
3320	57.85	-2.38	3.36
3330	40.57	-3.92	2.24
3340	35.3	-4.52	2.01
3350	57.2	-2.43	4.4
3360	40.13	-3.97	2.78
3370	63.21	-1.99	4.95
3380	45.75	-3.4	3.56
3390	59.12	-2.28	3.58
3400	61.05	-2.14	3.85
3410	51.53	-2.88	3.87
3420	52.85	-2.77	2.98
3430	71.77	-1.44	3.04
3440	71.07	-1.48	3.85
3450	60.98	-2.15	2.9

3460	51.54	-2.88	3.34
3470	77.57	-1.1	5
3480	64.6	-1.9	3.34
3490	72.09	-1.42	3.7
3500	66.6	-1.77	3.5
3510	69.82	-1.56	3.62
3520	59.05	-2.29	3.87
3530	54.97	-2.6	3.68
3540	52.11	-2.83	3.55
3550	45.33	-3.44	3.05
3560	49.56	-3.05	3.4
3570	68.51	-1.64	3.72
3580	52.66	-2.79	3.08
3590	70.32	-1.53	3.92
3600	70.9	-1.49	3.72
3610	71.56	-1.45	3.51

3620	61.71	-2.1	2.93
3630	68.97	-1.61	3.63
3640	62.65	-2.03	3.23
3650	54.46	-2.64	2.84
3660	55.76	-2.54	3.09
3670	52.06	-2.83	2.86
3680	69.03	-1.61	4.32
3690	55.69	-2.54	3.24
3700	56.43	-2.49	3.42
3710	67.81	-1.09	3.02
3720	64.69	-1.89	3.23
3730	56.97	-2.44	3.51
3740	70.44	-1.52	3.96
3750	60.92	-2.15	3.19
3760	68.98	-1.02	4.35
3770	58.76	-2.31	3.96

3780	60.66	-2.17	3.43
3790	55.08	-2.59	3.83
3800	65.15	-1.24	3.58
3810	69.42	-1.59	4.25
3820	68.39	-1.65	3.23
3830	72.51	-0.84	4.22
3840	68.38	-1.65	3.04
3850	65.77	-1.82	3.16
3860	71.65	-0.88	4.13
3870	54.9	-2.6	2.3
3880	65.59	-1.22	3.78
3890	64.04	-1.94	3.92
3900	71.42	-1.46	3.38
3910	64.1	-1.93	2.99
3920	62.39	-2.05	2.74
3930	68.19	-1.66	2.86

UNLESS OTHER SPECIFIED TOLERANCES ON : $X = \pm$ $X.X = \pm$ $X.XX = \pm$ ANGLES = $\pm$ HOLEDIA = $\pm$		 KINGRF TECHNOLOGY CO., LTD.
SCALE :	UNIT : mm	
DRAWN BY: LI	CHECKED BY: YS	THIS DRAWINGS AND SPECIFICATIONS ARE THE PROPERTY OF KINGRF TECHNOLOGY CO.,LTD.AND SHALL NOT BE REPRODUCED OR USED AS THE BASIS FOR THE MANUFACTURE OR SALE OF APPARATUS OR DEVICES WITHOUT PERMISSION
DESIGNED BY: De wen	APPROVED BY: YS	
TITLE : DA.0143.L5.2ES Antenna Specification		SPEC REV. P0

3940	64.91	-1.88	3.62
3950	55.36	-2.57	3.13
3960	66.04	-1.19	4.23
3970	67.11	-1.13	3.23
3980	68.35	-1.06	4.05
3990	57.23	-2.42	3.65
4000	59.57	-2.25	3.86
4010	57.75	-2.38	3.83
4020	68.6	-1.64	4.51
4030	55.94	-2.52	3.8
4040	53.61	-2.71	3.8
4050	53.62	-2.71	3.58
4060	72.67	-0.83	4.59
4070	48.93	-3.1	3.1
4080	50.24	-2.99	2.95
4090	46.92	-3.29	2.6

4100	55.27	-2.58	3.47
4110	43.48	-3.62	2.32
4120	41.25	-3.85	2.3
4130	42.35	-3.73	2.03
4140	67.61	-1.7	3.92
4150	50.03	-3.01	2.36
4160	46.75	-3.3	2.02
4170	48.52	-3.14	2.27
4180	65.29	-1.85	3.52
4190	50.29	-2.99	2.59
4200	49.52	-3.05	2.34
4210	33.82	-4.71	0.57
4220	53.18	-2.74	2.63
4230	49.44	-3.06	2.2
4240	69.69	-1.57	3.9
4250	42.04	-3.76	1.57

4260	50.51	-2.97	2.73
4270	39.84	-4	1.16
4280	47.15	-3.27	1.98
4290	44.49	-3.52	1.78
4300	60.84	-2.16	3.44
4310	50.82	-2.94	2.49
4320	69.56	-1.58	3.39
4330	55.46	-2.56	2.43
4340	67.01	-1.74	2.75
4350	64.75	-1.89	2.79
4360	65.23	-1.86	2.58
4370	48.72	-3.12	1.44
4380	64.38	-1.91	2.44
4390	61.28	-2.13	2.62
4400	58.62	-2.32	2
4410	48.52	-3.14	1.39

4420	64.56	-1.9	2.82
4430	56.32	-2.49	2.23
4440	41.91	-3.78	1.01
4450	43.8	-3.59	1.68
4460	48.23	-3.17	2.13
4470	32.58	-4.87	0.56
4480	37.63	-4.25	1.39
4490	35.5	-4.5	1.42
4500	26.51	-5.77	0.38
4510	23.12	-6.36	-0.26
4520	33.5	-4.75	1.16
4530	26.5	-5.77	0.09
4540	31.64	-5	0.51
4550	32.97	-4.82	0.19
4560	36.99	-4.32	0.63
4570	30.3	-5.19	0.27

UNLESS OTHER SPECIFIED TOLERANCES ON : $X = \pm$ $X.X = \pm$ $X.XX = \pm$ ANGLES = $\pm$ HOLEDIA = $\pm$			KINGRF TECHNOLOGY CO., LTD.
SCALE :	UNIT : mm		
DRAWN BY: LI	CHECKED BY: YS	THIS DRAWINGS AND SPECIFICATIONS ARE THE PROPERTY OF KINGRF TECHNOLOGY CO.,LTD.AND SHALL NOT BE REPRODUCED OR USED AS THE BASIS FOR THE MANUFACTURE OR SALE OF APPARATUS OR DEVICES WITHOUT PERMISSION	
DESIGNED BY: De wen	APPROVED BY: YS		
TITLE : DA.0143.L5.2ES Antenna Specification			SPEC REV. P0



4580	35.69	-4.47	0.79
4590	31.28	-5.05	0.43
4600	35.5	-4.5	0.7
4610	34.75	-4.59	0.43
4620	36.92	-4.33	0.64
4630	36.11	-4.42	0.35
4640	37.14	-4.3	0.65
4650	37.41	-4.27	0.87
4660	49.16	-3.08	1.24
4670	36.14	-4.42	0.7
4680	35.26	-4.53	0.48
4690	37.59	-4.25	0.85
4700	35.86	-4.45	0.36
4710	41.79	-3.79	0.8
4720	38.41	-4.16	0.52
4730	46.77	-3.3	1.48

4740	40.19	-3.96	0.77
4750	41.25	-3.85	1.22
4760	36.43	-4.39	0.52
4770	40.56	-3.92	1.27
4780	38.18	-4.18	0.76
4790	40.4	-3.94	0.82
4800	31.48	-5.02	-0.03
4810	43.82	-3.58	0.85
4820	36.97	-4.32	0.43
4830	40.82	-3.89	1.02
4840	42.92	-3.67	0.89
4850	45.91	-3.38	1.25
4860	41.91	-3.78	0.76
4870	37.92	-4.21	0.56
4880	34.27	-4.65	-0.06
4890	37.21	-4.29	0.4

4900	35.8	-4.46	0.39
4910	38.16	-4.18	0.68
4920	29.78	-5.26	-0.3
4930	33.38	-4.77	0.56
4940	33.95	-4.69	0.98
4950	48.18	-3.17	2.08
4960	43.77	-3.59	1.69
4970	37.72	-4.23	1.07
4980	38.47	-4.15	1.12
4990	44.82	-3.49	1.5
5000	39.7	-4.01	1.16
5010	55.33	-2.57	2.13
5020	45.15	-3.45	1.41
5030	40.07	-3.97	0.95
5040	39.09	-4.08	0.63
5050	40.32	-3.95	0.52

5060	39.09	-4.08	0.44
5070	44.2	-3.55	0.92
5080	43.11	-3.65	0.62
5090	40.12	-3.97	0.41
5100	36.08	-4.43	-0.08
5110	40.27	-3.95	0.1
5120	37.6	-4.25	0.11
5130	42.65	-3.7	0.86
5140	38.46	-4.15	0.36
5150	43.18	-3.65	0.58
5160	30.74	-5.12	-0.33
5170	30.69	-5.13	-0.3
5180	32.18	-4.92	-0.1
5190	33.15	-4.8	-0.15
5200	35.73	-4.47	0.25
5210	39.83	-4	0.57

UNLESS OTHER SPECIFIED TOLERANCES ON : $X = \pm$ $X.X = \pm$ $X.XX = \pm$ ANGLES = $\pm$ HOLEDIA = $\pm$			KINGRF TECHNOLOGY CO., LTD.
SCALE :	UNIT : mm		
DRAWN BY: LI	CHECKED BY: YS	THIS DRAWINGS AND SPECIFICATIONS ARE THE PROPERTY OF KINGRF TECHNOLOGY CO.,LTD.AND SHALL NOT BE REPRODUCED OR USED AS THE BASIS FOR THE MANUFACTURE OR SALE OF APPARATUS OR DEVICES WITHOUT PERMISSION	
DESIGNED BY: De wen	APPROVED BY: YS		
TITLE : DA.0143.L5.2ES Antenna Specification			SPEC REV. P0

5220	39.25	-4.06	0.55
5230	37.87	-4.22	0.48
5240	42.56	-3.71	0.76
5250	33.49	-4.75	0.04
5260	39.43	-4.04	0.47
5270	39	-5.38	0.24
5280	30.26	-5.19	-0.22
5290	32.11	-4.93	-0.24
5300	31.99	-4.95	-0.38
5310	36.71	-5.73	-1.05
5320	36.57	-5.76	-0.86
5330	39.2	-5.35	-0.9
5340	237.65	-5.58	-0.69
5350	30.26	-5.19	-0.45
5360	39.7	-5.27	0.61
5370	30.13	-5.21	-0.23

5380	39.02	-5.37	-0.35
5390	37.25	-5.65	-0.42
5400	36.14	-4.42	0.76
5410	32.72	-4.85	0.44
5420	42.58	-3.71	1.21
5430	31.63	-5	0.25
5440	30.55	-5.15	-0.08
5450	45.67	-3.4	1.57
5460	38.12	-5.51	-0.4
5470	34.25	-4.65	0.21
5480	31.82	-4.97	-0.04
5490	35.09	-4.55	0.3
5500	39.02	-4.09	0.81
5510	41.66	-3.8	0.95
5520	44.13	-3.55	1.03
5530	38.3	-4.17	0.45

5540	44.32	-3.53	1.12
5550	39.48	-4.04	0.32
5560	41.51	-3.82	0.51
5570	43	-3.67	0.59
5580	43.7	-3.6	0.98
5590	36.03	-4.43	-0.18
5600	32.2	-4.92	-0.79
5610	35.83	-4.46	-0.07
5620	41.5	-3.82	1.2
5630	32.78	-4.84	-0.51
5640	34.91	-4.57	0.24
5650	45.8	-3.39	1.85
5660	33.63	-4.73	-0.24
5670	38.53	-4.14	0.6
5680	34.94	-4.57	0.08
5690	37.05	-4.31	0.41

5700	48.85	-3.11	2.22
5710	33.84	-4.71	0.62
5720	40.13	-3.97	1.73
5730	48.29	-3.16	2.89
5740	38.42	-4.15	1.86
5750	32.25	-4.91	1.02
5760	42.48	-3.72	2.39
5770	62.22	-2.06	4.47
5780	31.54	-5.01	0.89
5790	38.54	-4.14	1.9
5800	41.32	-3.84	2.42
5810	37.89	-4.22	2.22
5820	33.99	-4.69	1.88
5830	39.4	-4.05	2.46
5840	34.94	-4.57	1.85
5850	43.46	-3.62	2.94

UNLESS OTHER SPECIFIED TOLERANCES ON :  
 $X = \pm$                        $X.X = \pm$                        $X.XX = \pm$   
 ANGLES =  $\pm$                       HOLEDIA =  $\pm$



KINGRF TECHNOLOGY CO., LTD.

SCALE :                      UNIT : mm  
 DRAWN BY: LI                      CHECKED BY: YS  
 DESIGNED BY: De wen                      APPROVED BY: YS

THIS DRAWINGS AND SPECIFICATIONS ARE THE PROPERTY OF KINGRF TECHNOLOGY CO.,LTD.AND SHALL NOT BE REPRODUCED OR USED AS THE BASIS FOR THE MANUFACTURE OR SALE OF APPARATUS OR DEVICES WITHOUT PERMISSION


TITLE : DA.0143.L5.2ES Antenna Specification

SPEC REV.  
P0



5860	34.06	-4.68	1.64
5870	57.24	-2.42	4.33
5880	30.22	-5.2	1.39
5890	35.44	-4.51	1.98
5900	46.84	-3.29	3.55
5910	38.27	-4.17	3.57
5920	31.15	-5.06	1.54
5930	48.96	-3.1	3.45

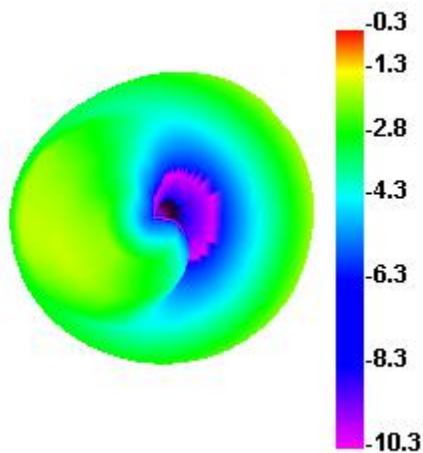
5940	50.93	-2.93	3.06
5950	53.9	-2.68	3.98
5960	46.65	-4.36	2.71
5970	63.18	-0.8	3.69
5980	63.54	0.55	3.83
5990	69.68	1.13	4.07
6000	51.82	-2.86	3.55

UNLESS OTHER SPECIFIED TOLERANCES ON : $X = \pm$ $X.X = \pm$ $X.XX = \pm$ ANGLES = $\pm$ HOLEDIA = $\pm$		 KINGRF TECHNOLOGY CO., LTD.
SCALE :	UNIT : mm	
DRAWN BY: LI	CHECKED BY: YS	THIS DRAWINGS AND SPECIFICATIONS ARE THE PROPERTY OF KINGRF TECHNOLOGY CO.,LTD.AND SHALL NOT BE REPRODUCED OR USED AS THE BASIS FOR THE MANUFACTURE OR SALE OF APPARATUS OR DEVICES WITHOUT PERMISSION
DESIGNED BY: De wen	APPROVED BY: YS	
TITLE : DA.0143.L5.2ES Antenna Specification		SPEC REV. P0

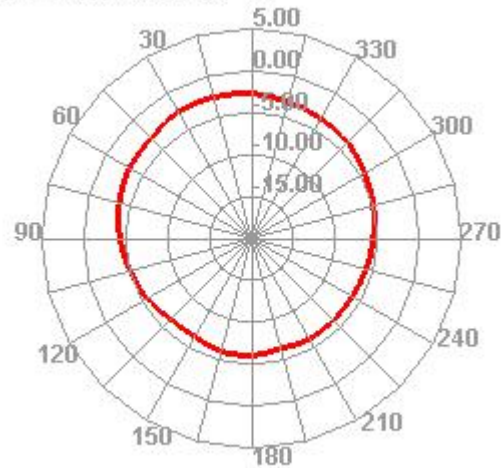


## 2-4-2: Radiation direction

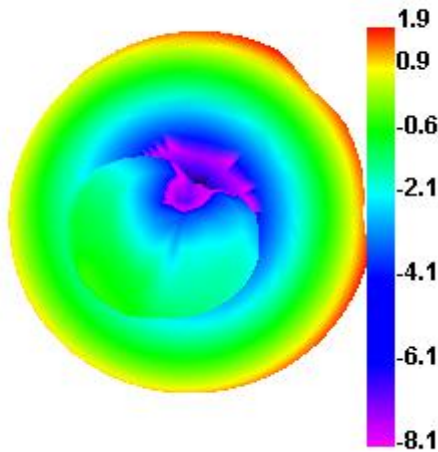
600.000MHz



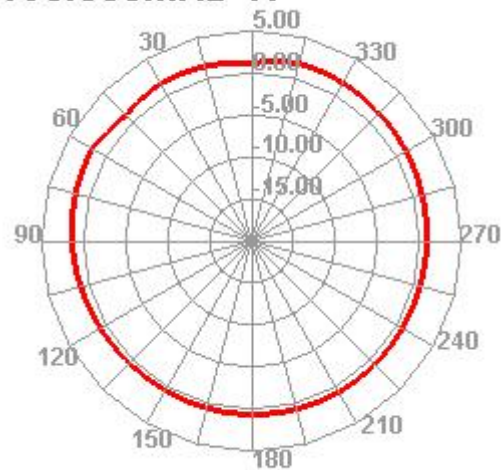
600.000MHz H



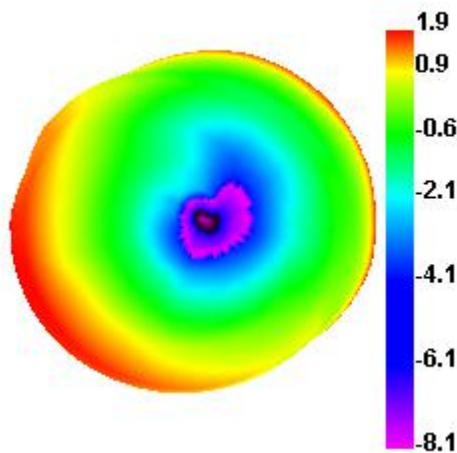
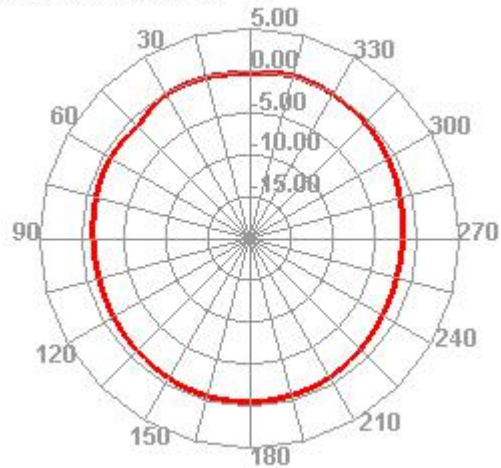
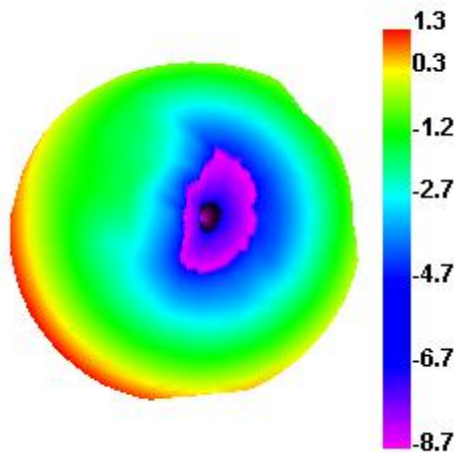
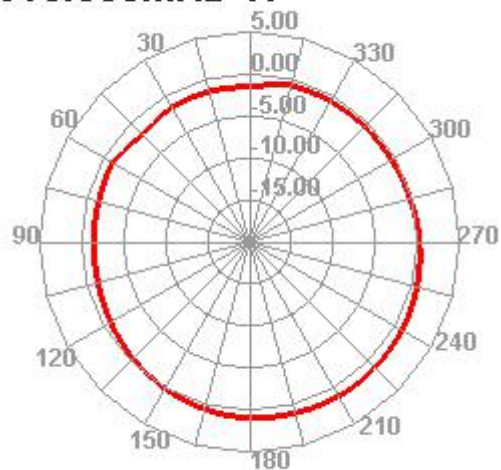
690.000MHz



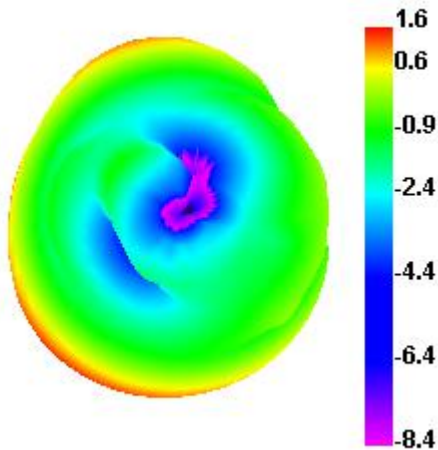
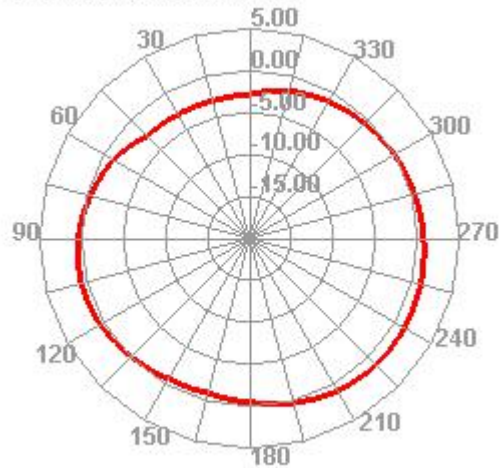
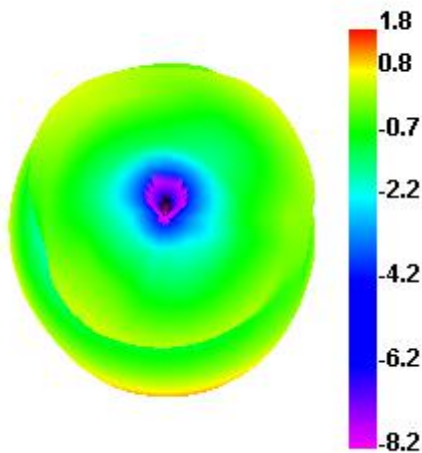
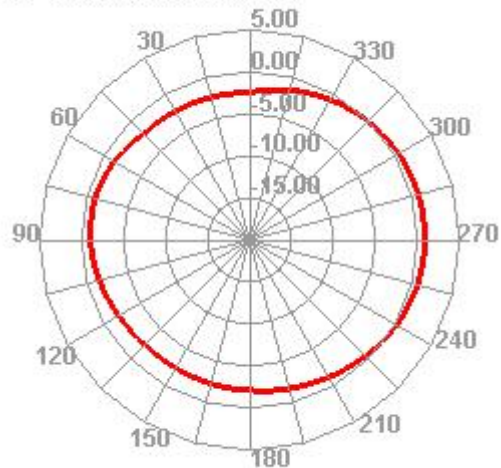
690.000MHz H



UNLESS OTHER SPECIFIED TOLERANCES ON :			<b>KINGRF TECHNOLOGY CO., LTD.</b>
$X = \pm$ $X.X = \pm$ $X.XX = \pm$ <b>ANGLES = <math>\pm</math></b> <b>HOLEDIA = <math>\pm</math></b>			
<b>SCALE :</b>	<b>UNIT : mm</b>	THIS DRAWINGS AND SPECIFICATIONS ARE THE PROPERTY OF KINGRF TECHNOLOGY CO.,LTD.AND SHALL NOT BE REPRODUCED OR USED AS THE BASIS FOR THE MANUFACTURE OR SALE OF APPARATUS OR DEVICES WITHOUT PERMISSION	
<b>DRAWN BY: LI</b>	<b>CHECKED BY: YS</b>		
<b>DESIGNED BY: De wen</b>	<b>APPROVED BY: YS</b>		
<b>TITLE : DA.0143.L5.2ES Antenna Specification</b>			<b>SPEC REV.</b> P0

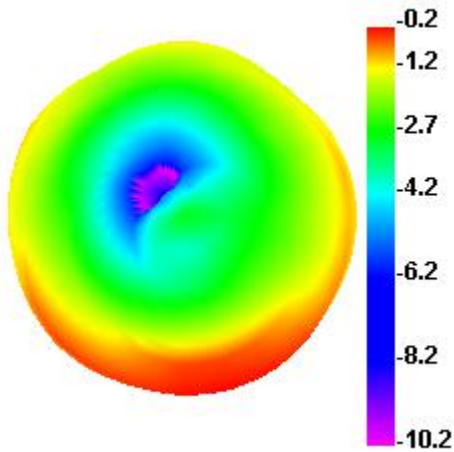
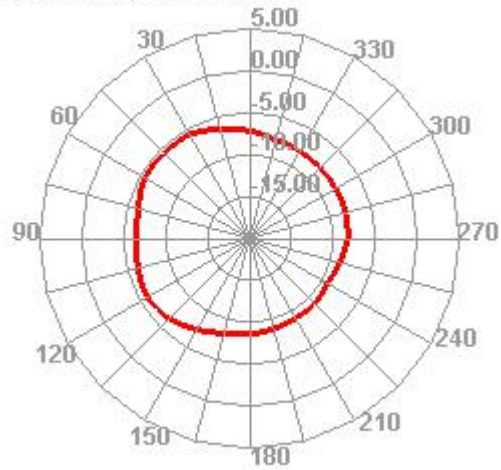
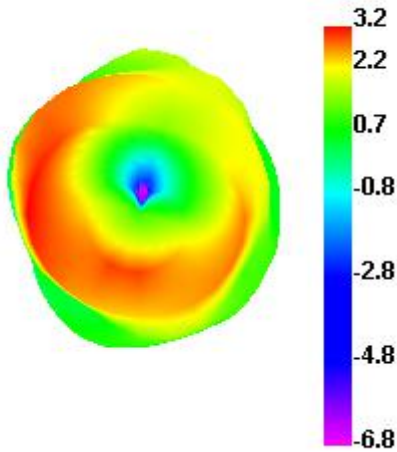
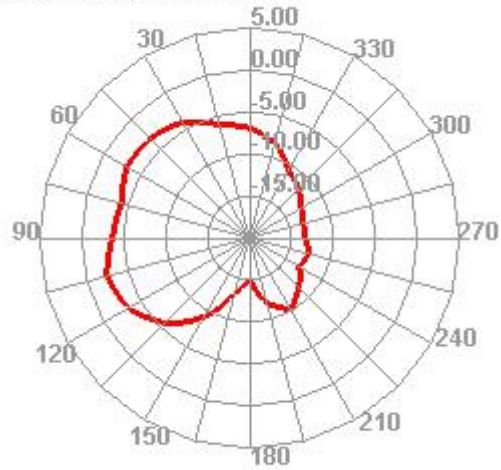
**820.000MHz**

**820.000MHz H**

**960.000MHz**

**960.000MHz H**


UNLESS OTHER SPECIFIED TOLERANCES ON :			<b>KINGRF TECHNOLOGY CO., LTD.</b>
$X = \pm$ $X.X = \pm$ $X.XX = \pm$ <b>ANGLES = <math>\pm</math></b> <b>HOLEDIA = <math>\pm</math></b>			
<b>SCALE :</b>	<b>UNIT : mm</b>	THIS DRAWINGS AND SPECIFICATIONS ARE THE PROPERTY OF KINGRF TECHNOLOGY CO.,LTD.AND SHALL NOT BE REPRODUCED OR USED AS THE BASIS FOR THE MANUFACTURE OR SALE OF APPARATUS OR DEVICES WITHOUT PERMISSION	
<b>DRAWN BY: LI</b>	<b>CHECKED BY: YS</b>		
<b>DESIGNED BY: De wen</b>	<b>APPROVED BY: YS</b>		
<b>TITLE : DA.0143.L5.2ES Antenna Specification</b>			<b>SPEC REV.</b> P0

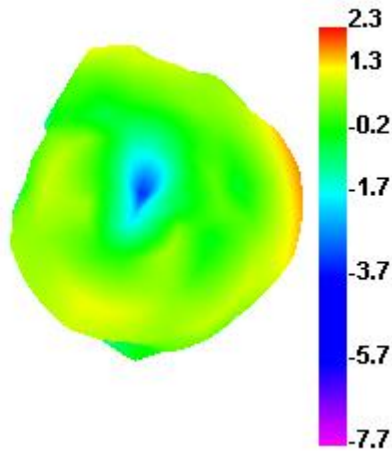
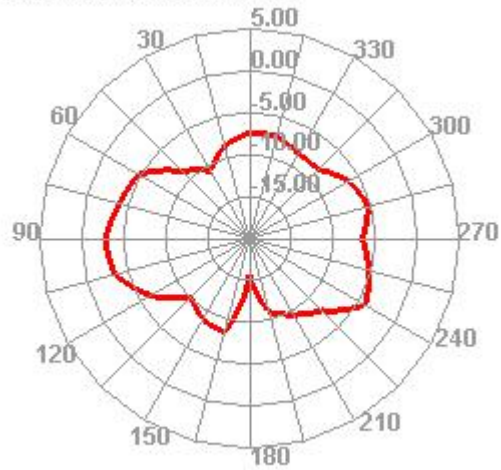
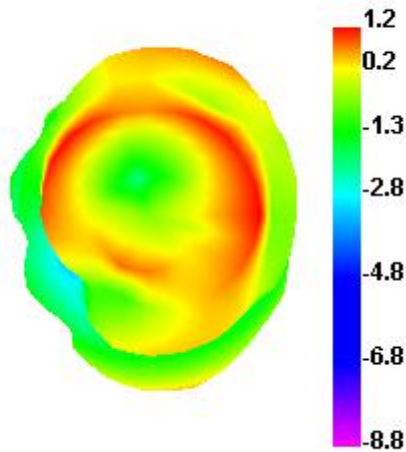
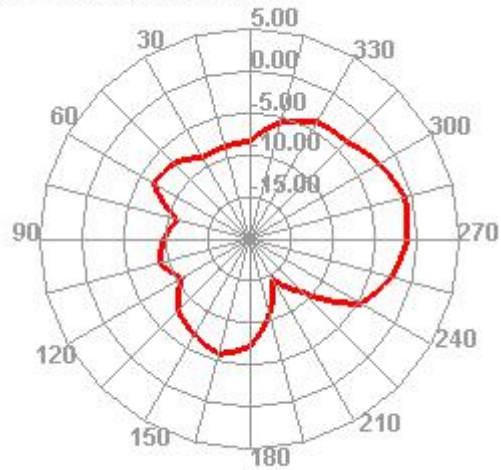
**1450.000MHz**

**1450.000MHz H**

**1710.000MHz**

**1710.000MHz H**


UNLESS OTHER SPECIFIED TOLERANCES ON : $X = \pm$ $X.X = \pm$ $X.XX = \pm$ ANGLES = $\pm$ HOLEDIA = $\pm$			<b>KINGRF TECHNOLOGY CO., LTD.</b>
SCALE :	UNIT : mm		
DRAWN BY: LI	CHECKED BY: YS		
DESIGNED BY: De wen	APPROVED BY: YS		
TITLE : DA.0143.L5.2ES Antenna Specification			SPEC REV. P0

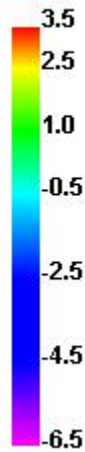
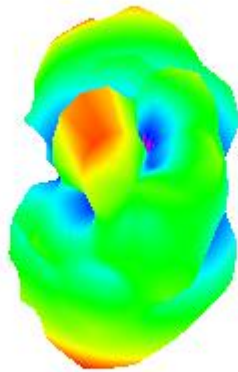
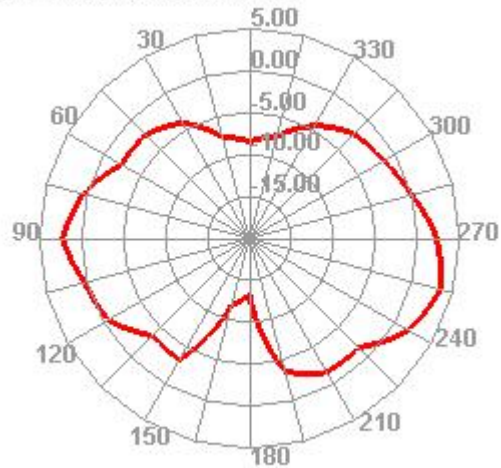


**2690.000MHz**

**2690.000MHz H**

**3300.000MHz**

**3300.000MHz H**


UNLESS OTHER SPECIFIED TOLERANCES ON :			<b>KINGRF TECHNOLOGY CO., LTD.</b>
$X = \pm$ $X.X = \pm$ $X.XX = \pm$ <b>ANGLES = <math>\pm</math></b> <b>HOLEDIA = <math>\pm</math></b>			
<b>SCALE :</b>	<b>UNIT : mm</b>	THIS DRAWINGS AND SPECIFICATIONS ARE THE PROPERTY OF KINGRF TECHNOLOGY CO.,LTD.AND SHALL NOT BE REPRODUCED OR USED AS THE BASIS FOR THE MANUFACTURE OR SALE OF APPARATUS OR DEVICES WITHOUT PERMISSION	
<b>DRAWN BY: LI</b>	<b>CHECKED BY: YS</b>		
<b>DESIGNED BY: De wen</b>	<b>APPROVED BY: YS</b>		
<b>TITLE : DA.0143.L5.2ES Antenna Specification</b>			<b>SPEC REV.</b> P0

**4200.000MHz**

**4200.000MHz H**

**5000.000MHz**

**5000.000MHz H**


UNLESS OTHER SPECIFIED TOLERANCES ON :		<b>KINGRF TECHNOLOGY CO., LTD.</b>
X=±            X.X=±            X.XX=± ANGLES=±            HOLEDIA=±		
SCALE :	UNIT : mm	THIS DRAWINGS AND SPECIFICATIONS ARE THE PROPERTY OF KINGRF TECHNOLOGY CO.,LTD.AND SHALL NOT BE REPRODUCED OR USED AS THE BASIS FOR THE MANUFACTURE OR SALE OF APPARATUS OR DEVICES WITHOUT PERMISSION
DRAWN BY: LI	CHECKED BY: YS	
DESIGNED BY: De wen	APPROVED BY: YS	
TITLE : DA.0143.L5.2ES Antenna Specification		SPEC REV. P0

**6000.000MHz**

**6000.000MHz H**


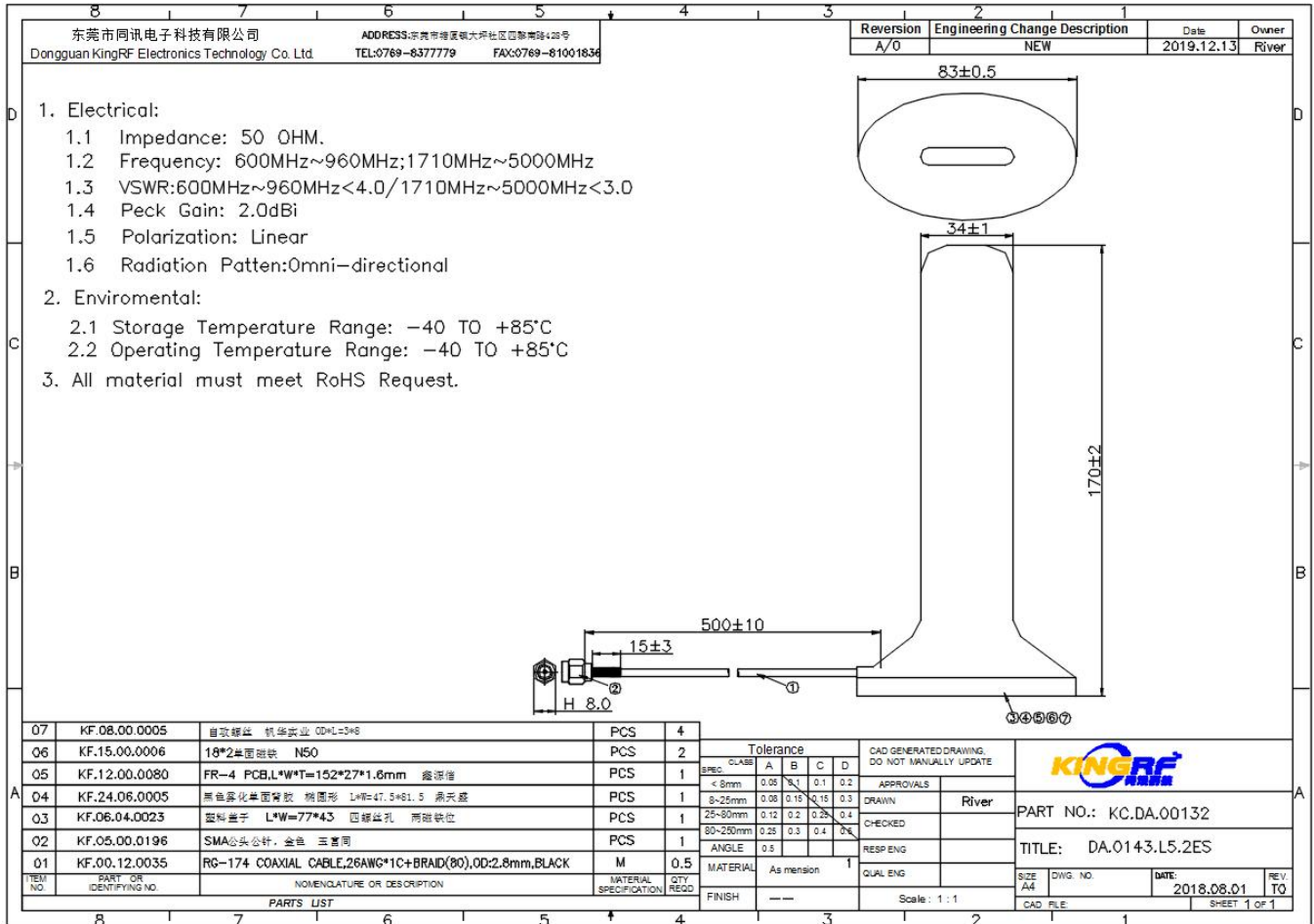
UNLESS OTHER SPECIFIED TOLERANCES ON :			<b>KINGRF TECHNOLOGY CO., LTD.</b>
$X = \pm$ $X.X = \pm$ $X.XX = \pm$ <b>ANGLES = <math>\pm</math></b> <b>HOLEDIA = <math>\pm</math></b>			
<b>SCALE :</b>	<b>UNIT : mm</b>	THIS DRAWINGS AND SPECIFICATIONS ARE THE PROPERTY OF KINGRF TECHNOLOGY CO.,LTD.AND SHALL NOT BE REPRODUCED OR USED AS THE BASIS FOR THE MANUFACTURE OR SALE OF APPARATUS OR DEVICES WITHOUT PERMISSION	
<b>DRAWN BY: LI</b>	<b>CHECKED BY: YS</b>		
<b>DESIGNED BY: De wen</b>	<b>APPROVED BY: YS</b>		
<b>TITLE : DA.0143.L5.2ES Antenna Specification</b>			<b>SPEC REV.</b> P0



### 3. Mechanical Specification:

#### 3-1. Mechanical Configuration (Unit: mm)

The appearance of the antenna is according to drawing



UNLESS OTHER SPECIFIED TOLERANCES ON : <b>X=±                      X.X=±                      X.XX=±</b> <b>ANGLES=±                      HOLEDIA=±</b>			<b>KINGRF TECHNOLOGY CO., LTD.</b>
<b>SCALE :</b>	<b>UNIT : mm</b>	THIS DRAWINGS AND SPECIFICATIONS ARE THE PROPERTY OF KINGRF TECHNOLOGY CO.,LTD.AND SHALL NOT BE REPRODUCED OR USED AS THE BASIS FOR THE MANUFACTURE OR SALE OF APPARATUS OR DEVICES WITHOUT PERMISSION	
<b>DRAWN BY: LI</b>	<b>CHECKED BY: YS</b>		
<b>DESIGNED BY: De wen</b>	<b>APPROVED BY: YS</b>		
<b>TITLE : DA.0143.L5.2ES Antenna Specification</b>			<b>SPEC REV. P0</b>


### 3-2. Connector appearance:

SMA-J



### 5.Product Image:

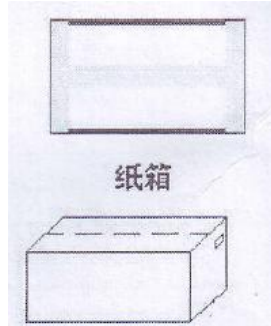


UNLESS OTHER SPECIFIED TOLERANCES ON :			<b>KINGRF TECHNOLOGY CO., LTD.</b>
$X = \pm$ $X.X = \pm$ $X.XX = \pm$ <b>ANGLES = <math>\pm</math></b> <b>HOLEDIA = <math>\pm</math></b>			
<b>SCALE :</b>	<b>UNIT : mm</b>	THIS DRAWINGS AND SPECIFICATIONS ARE THE PROPERTY OF KINGRF TECHNOLOGY CO.,LTD.AND SHALL NOT BE REPRODUCED OR USED AS THE BASIS FOR THE MANUFACTURE OR SALE OF APPARATUS OR DEVICES WITHOUT PERMISSION	
<b>DRAWN BY: LI</b>	<b>CHECKED BY: YS</b>		
<b>DESIGNED BY: De wen</b>	<b>APPROVED BY: YS</b>		
<b>TITLE : DA.0143.L5.2ES Antenna Specification</b>			<b>SPEC REV.</b> <b>P0</b>


## 5 .Packaging specification:

<b>Product number:</b> xxx			
<b>Product model:</b> xxx			
<b>一、 Label requirements:</b>			
<b>Customer</b>	xxx		
<b>supplier</b>	xxxxx		
<b>Material coding</b>	xx		
<b>Product model</b>	xx		
<b>Number</b>	XXX PCS	<b>Factory date</b>	X X X
<b>Remarks</b>			
<b>二、 Boxing:</b>			
<b>Job description:</b>			
<b>1. Inner packaging:</b>			
XXpcs A bag			
<b>2. External packaging:</b>			
Xx PCS ;			
<b>3. Matters needing attention:</b>			
a. Whether to add partition and pearl cotton;			
b. Label attachments, such as ROHS, etc.;			

PE 袋



纸箱

UNLESS OTHER SPECIFIED TOLERANCES ON :			<b>KINGRF TECHNOLOGY CO., LTD.</b>
X=±	X.X=±		
ANGLES=±	HOLEDIA=±		
<b>SCALE :</b>	<b>UNIT : mm</b>		THIS DRAWINGS AND SPECIFICATIONS ARE THE PROPERTY OF KINGRF TECHNOLOGY CO.,LTD.AND SHALL NOT BE REPRODUCED OR USED AS THE BASIS FOR THE MANUFACTURE OR SALE OF APPARATUS OR DEVICES WITHOUT PERMISSION
DRAWN BY: LI	CHECKED BY: YS		
DESIGNED BY: De wen	APPROVED BY: YS		
<b>TITLE : DA.0143.L5.2ES Antenna Specification</b>			<b>SPEC REV.</b>
			<b>P0</b>